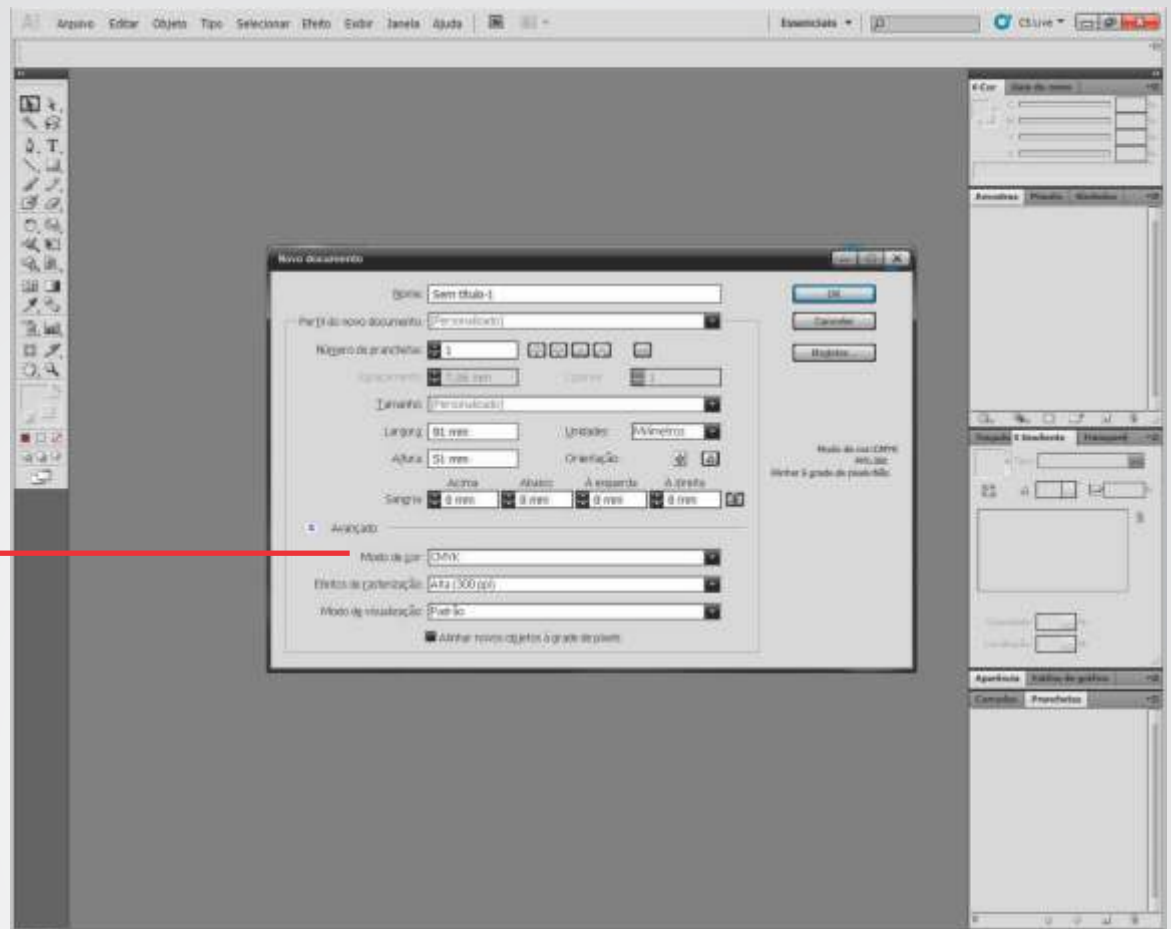
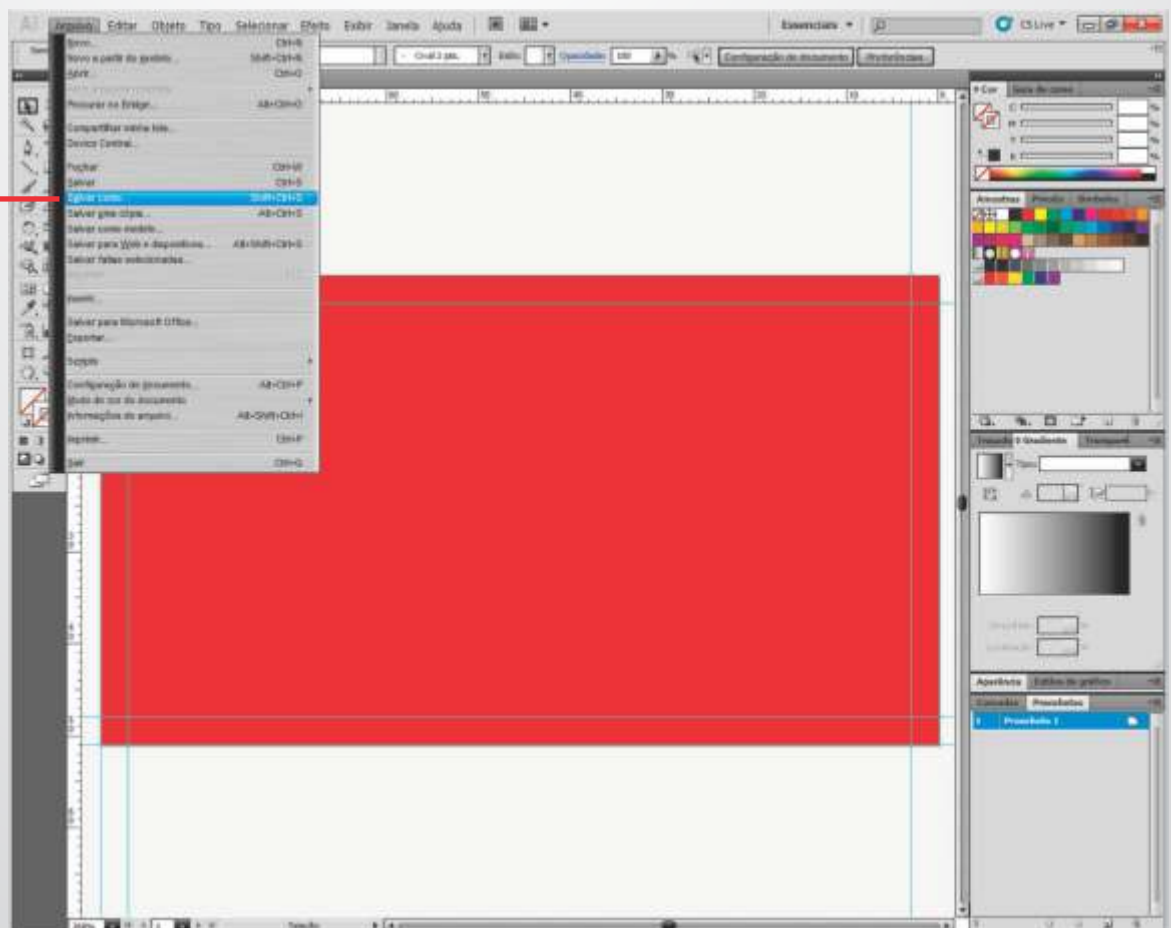


**MANUAL DE
CONFIGURAÇÃO
PDF-X1a
ILLUSTRATOR**

CONFIGURANDO PDF-X1A NO ILLUSTRATOR

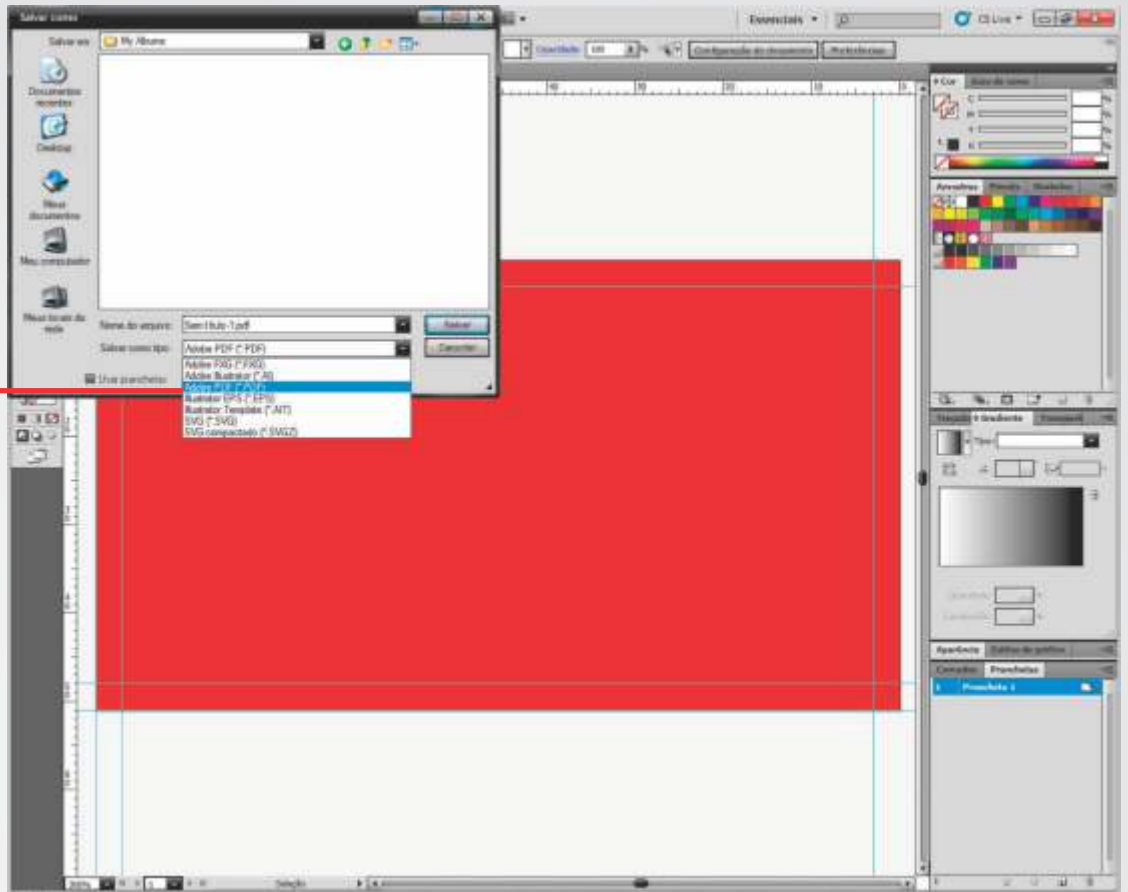


Inicie o
Documento
Modo de Cor
CMYK



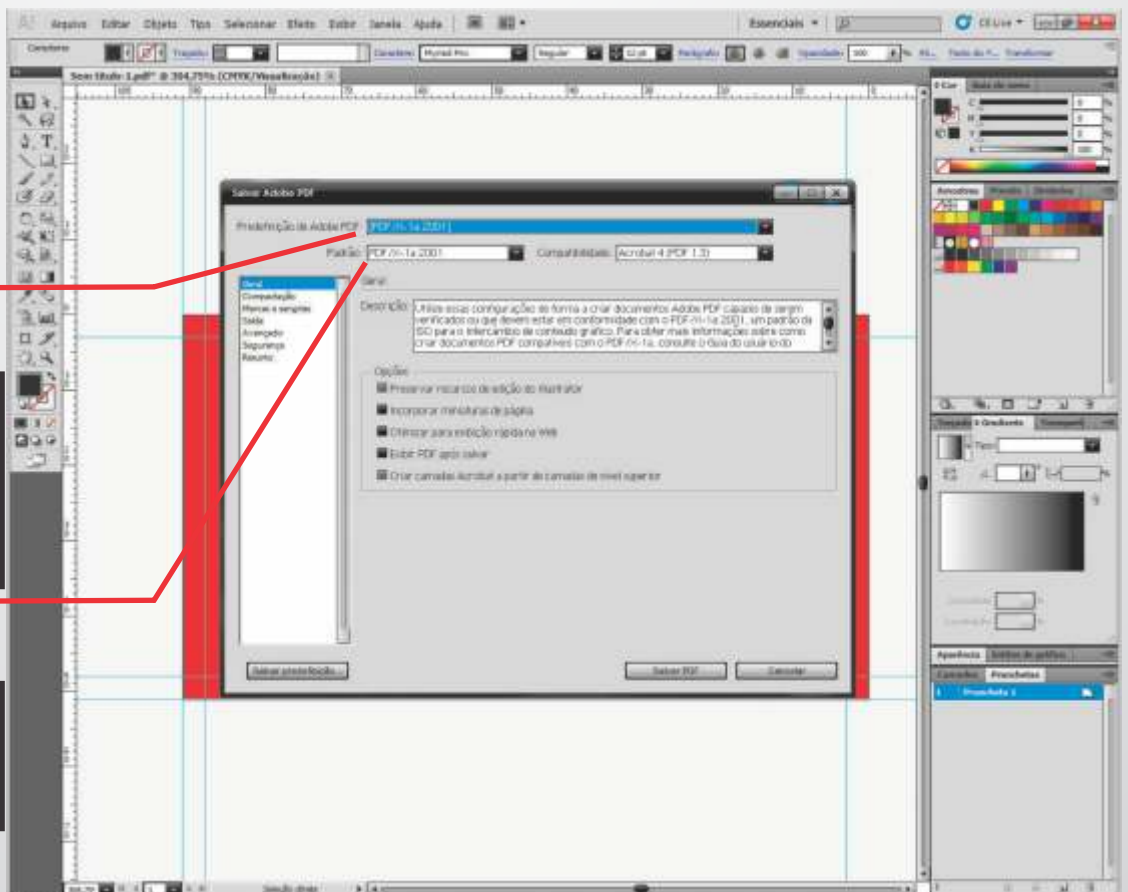
Depois do
documento
pronto vá em:
Salvar como

CONFIGURANDO PDF-X1A NO ILLUSTRATOR



Salvar Como:
Adobe PDF (*.PDF)

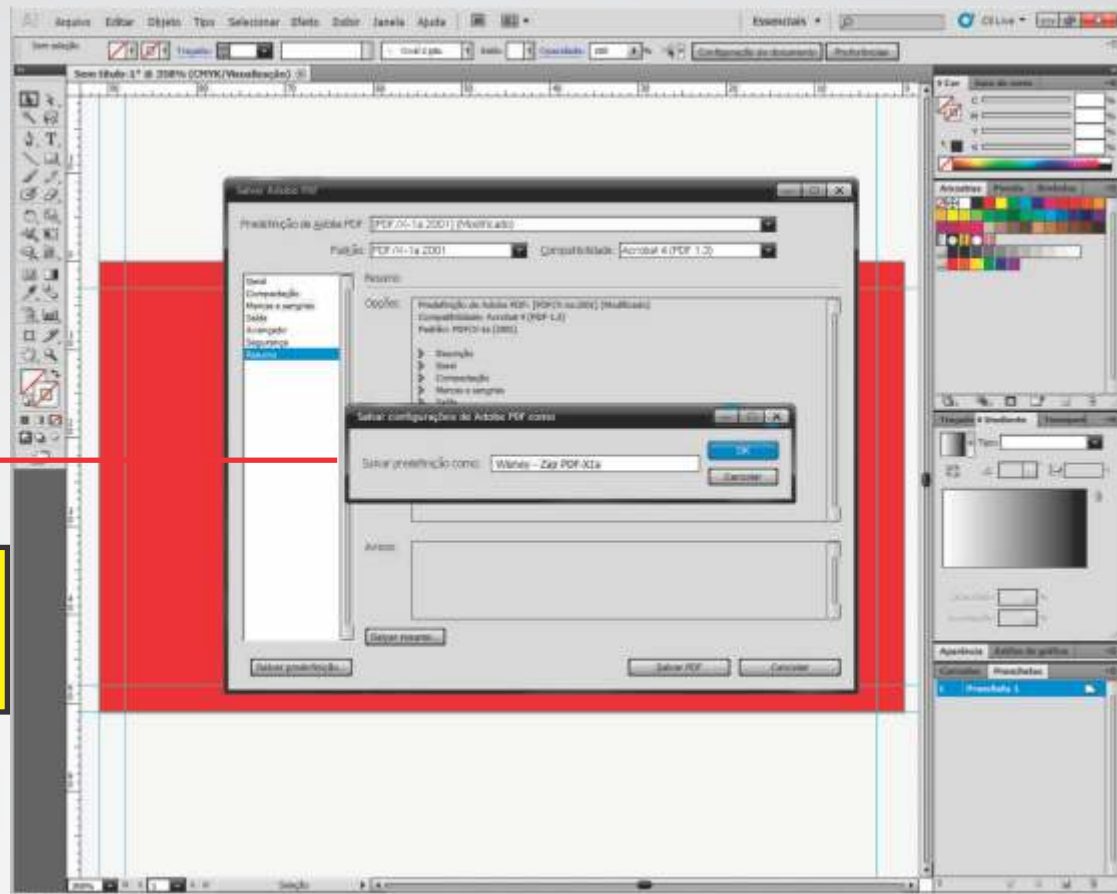
**Guia de
Geral**



**Predefinições
de Adobe PDF:**
PDF/X-1a:2001

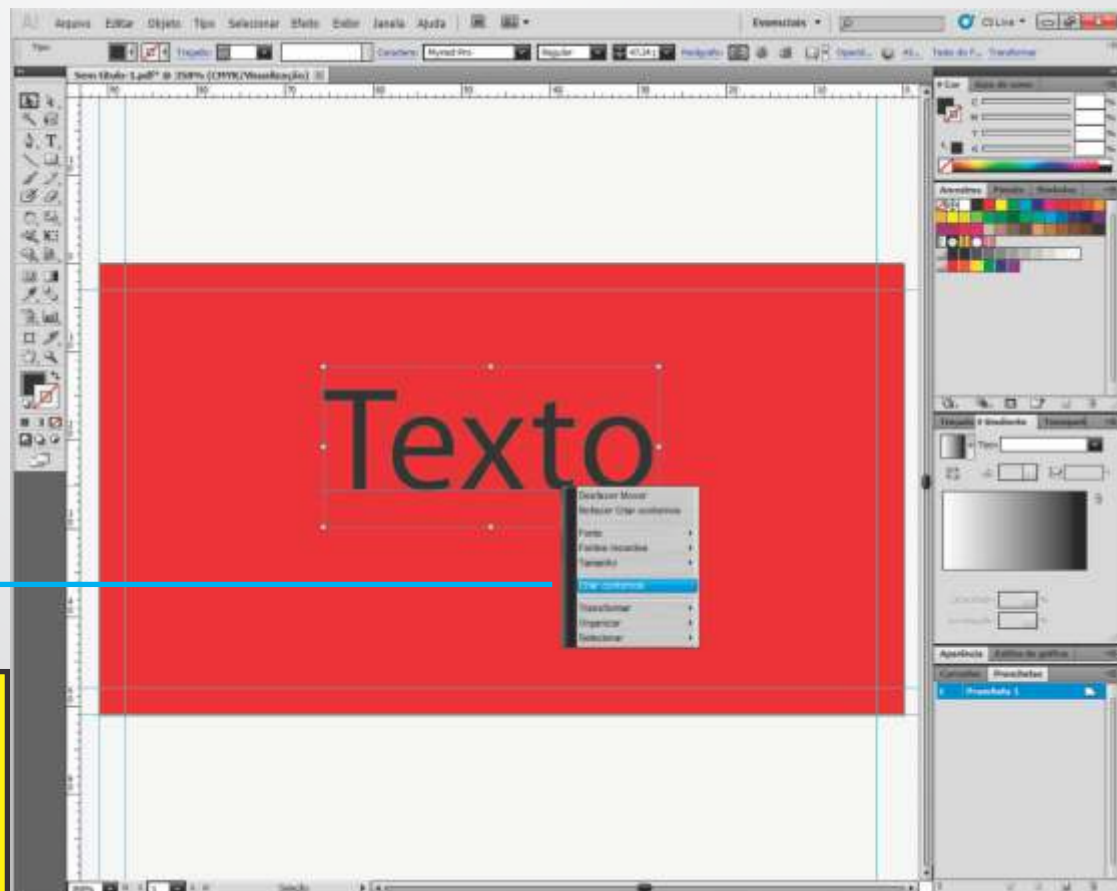
Padrão
PDF/X-1a:2001

CONFIGURANDO PDF-X1A NO ILLUSTRATOR



Coloque o nome desejado aqui

Sabendo que todo texto deve ser convertido. (Quebrado)



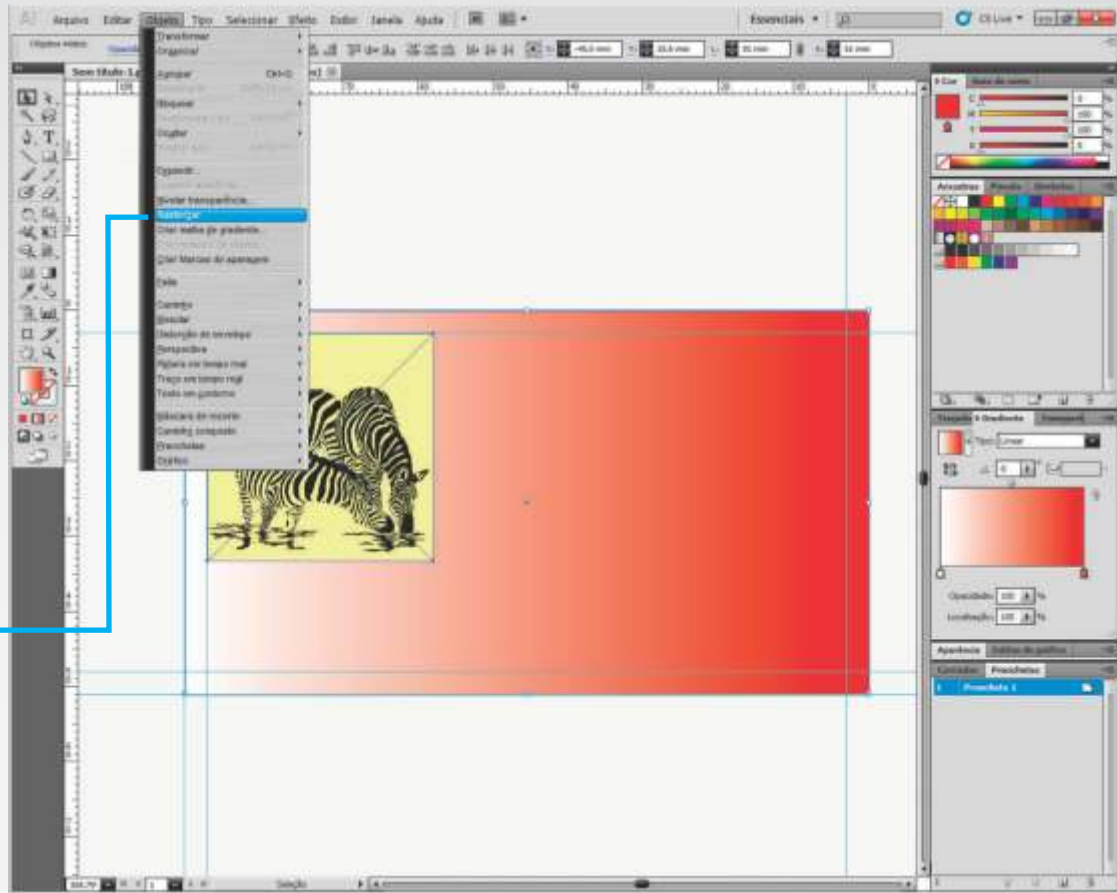
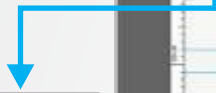
Clique com o botão direito do mouse

Criar Contornos (Creat Outlines)

CONFIGURANDO PDF-X1A NO ILLUSTRATOR

E também
Fotos, degradados
ou qualquer
tipo de efeitos
deve ser convertido
(Rasterizado).

(Convertendo em
Bitmap 300 CMYK)



**Clique aqui
para converter**
Rasterizar
**Criar um único
bitmap**