

**MANUAL DE
CONFIGURAÇÃO
PDF-X1a
PHOTOSHOP**

CONFIGURANDO PDF-X1A NO PHOTOSHOP

Iniciando um Novo Documento

Neste caso Cartão Visita

Largura: 91 mm

Altura: 51 mm

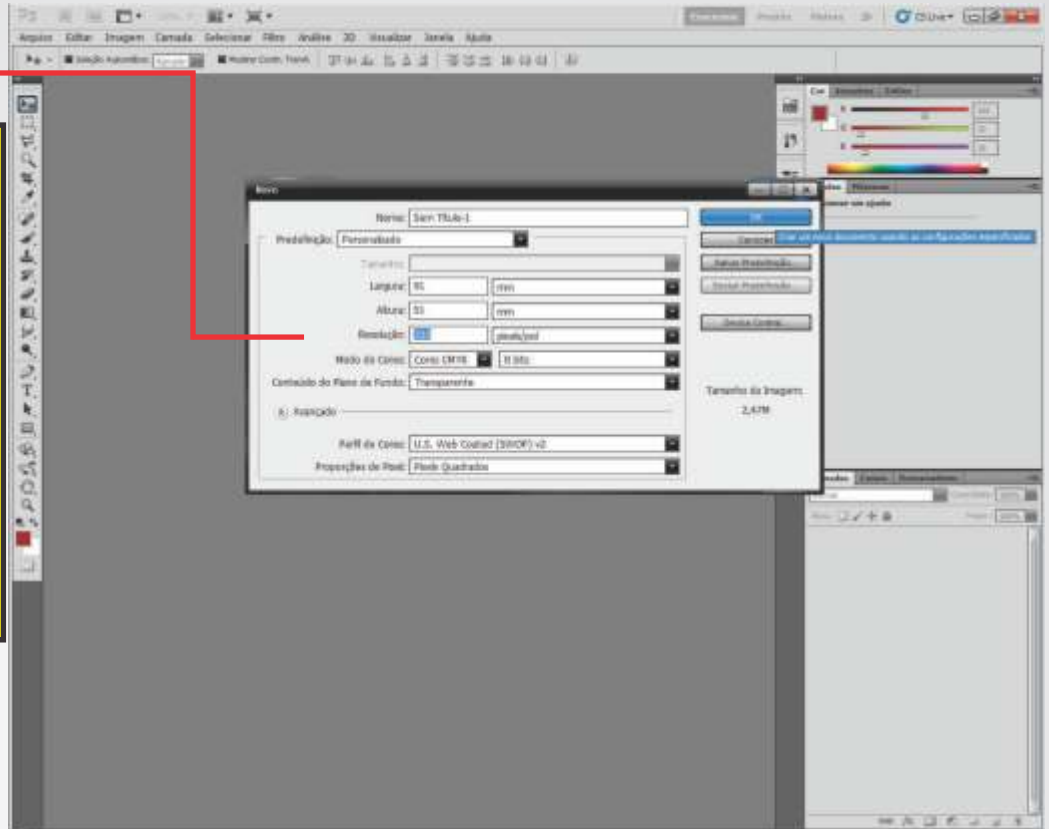
Resolução: 300 dpi

Modo de Cores:

Cores CMYK

Perfil de Cores:

U.S. Web Coated (SWOP) v2

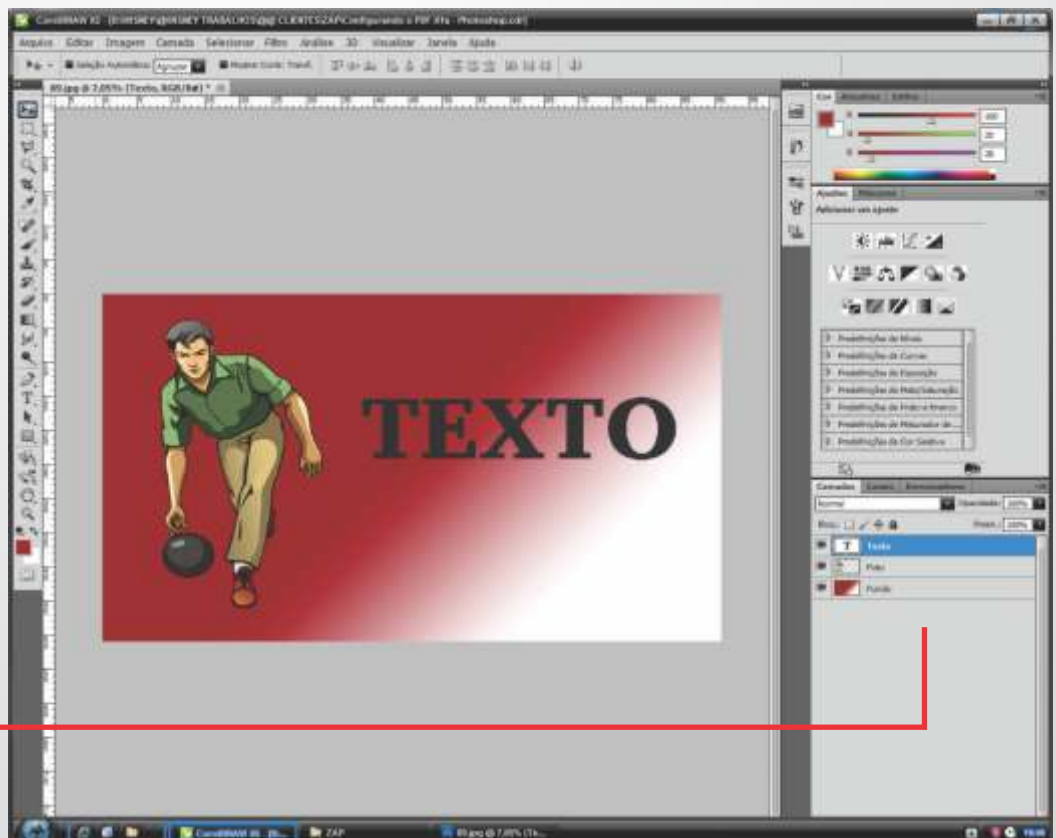


Trabalhamos aqui
com 3 Camadas (Layers)

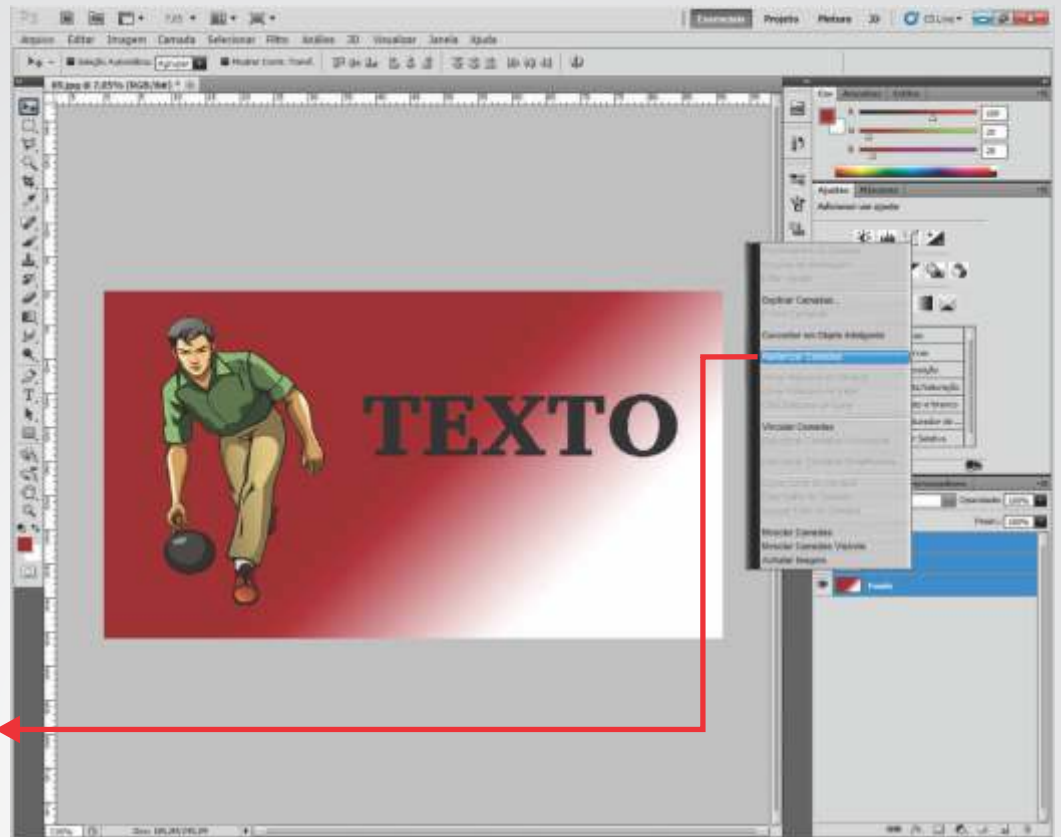
1 • Fundo

2 • Foto (Recortada)

3 • Texto

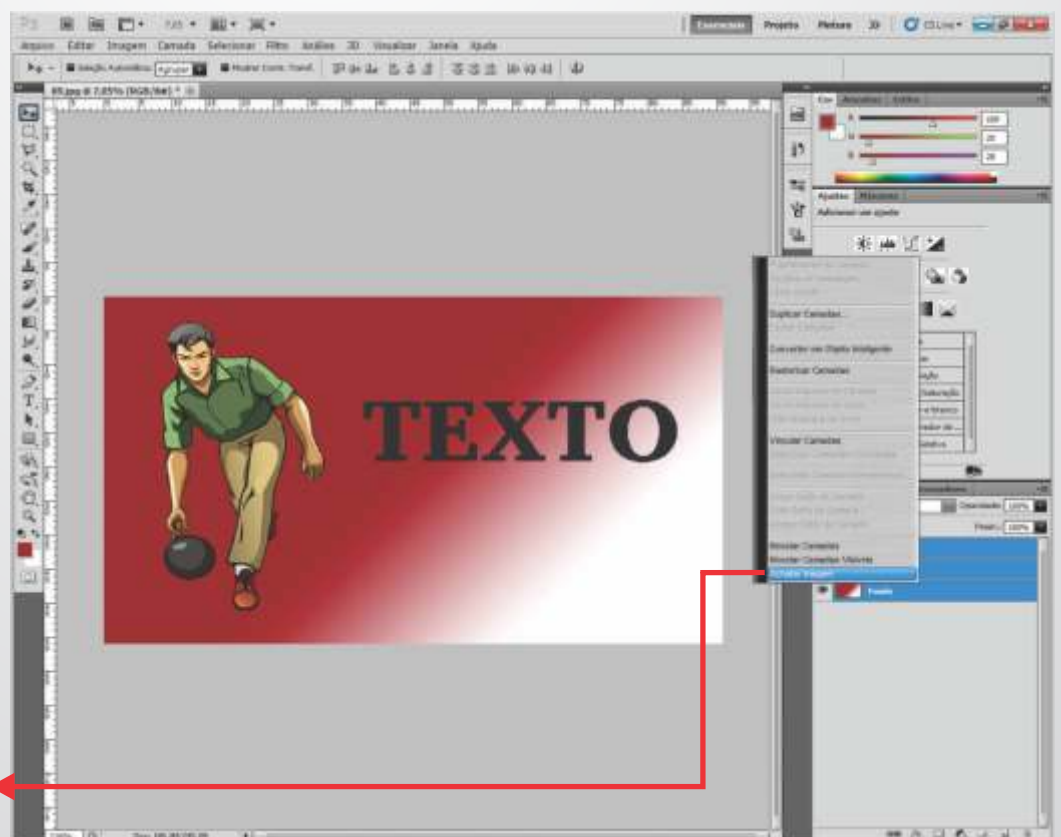


CONFIGURANDO PDF-X1A NO PHOTOSHOP



Devemos Rasterizar
Todas as Camadas
(Layers)

Para quebrar texto
e outras especificações

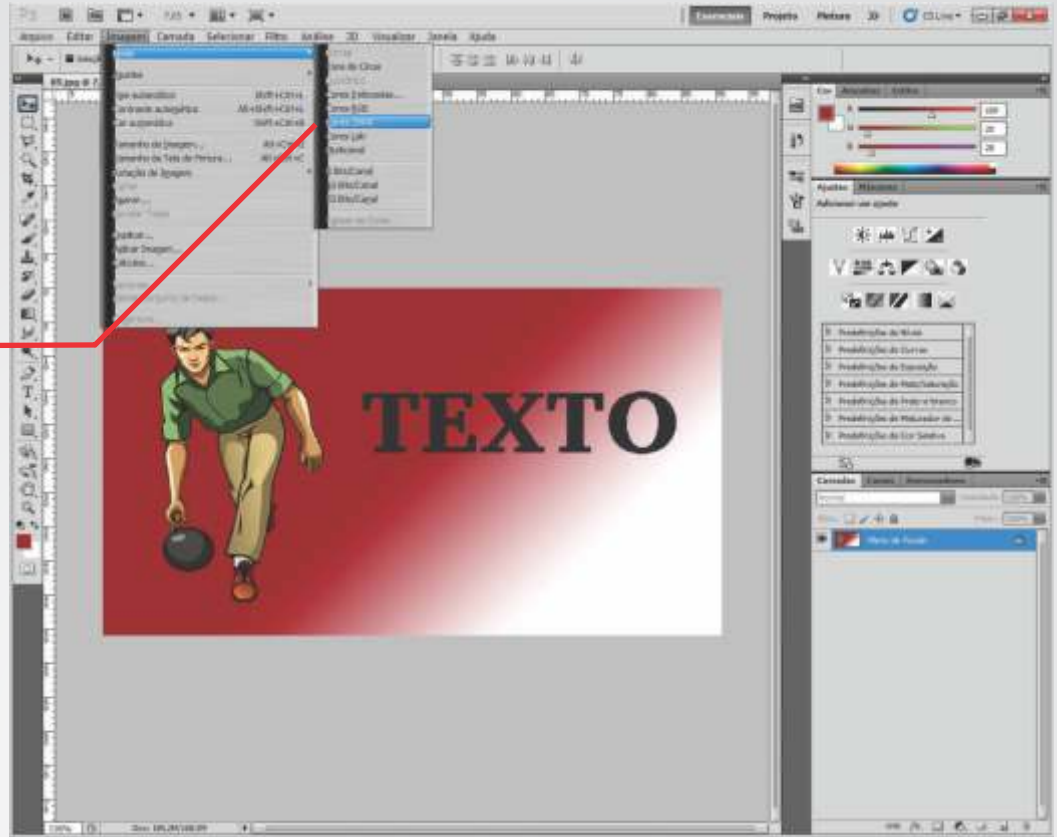


Depois devemos
Achatar as camadas

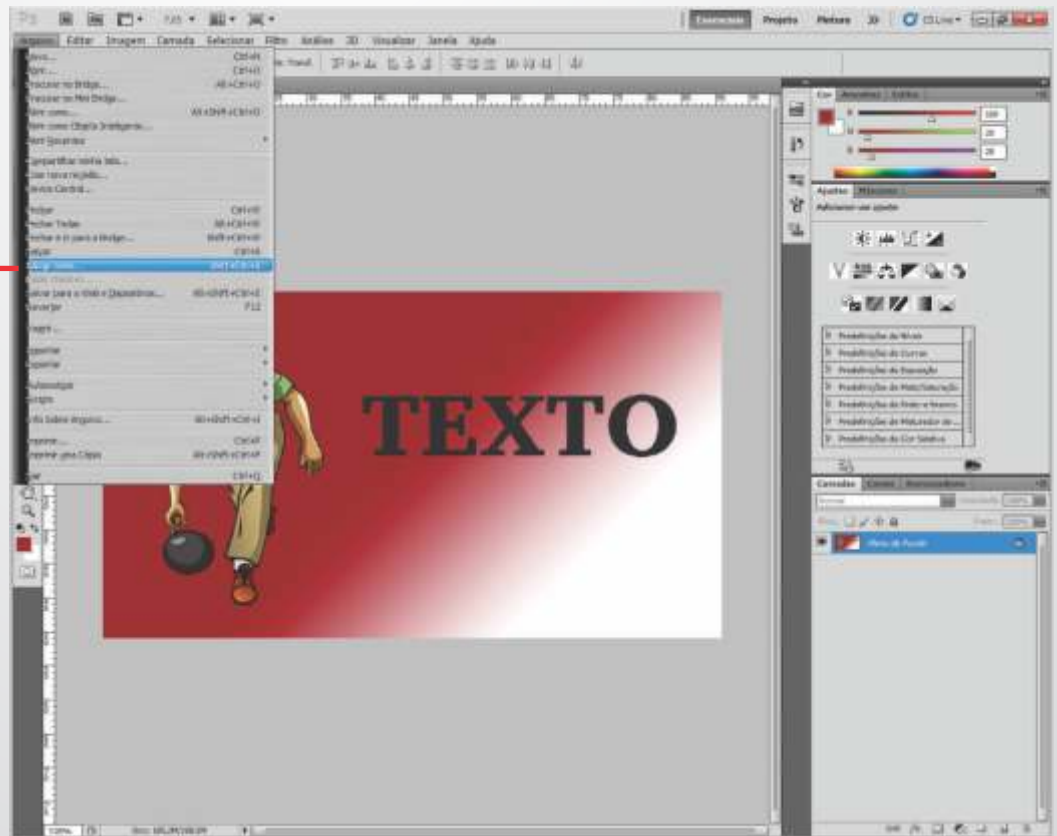
Transformando assim
em uma imagem só

CONFIGURANDO PDF-X1A NO ILLUSTRATOR

Depois de Achatado as camadas



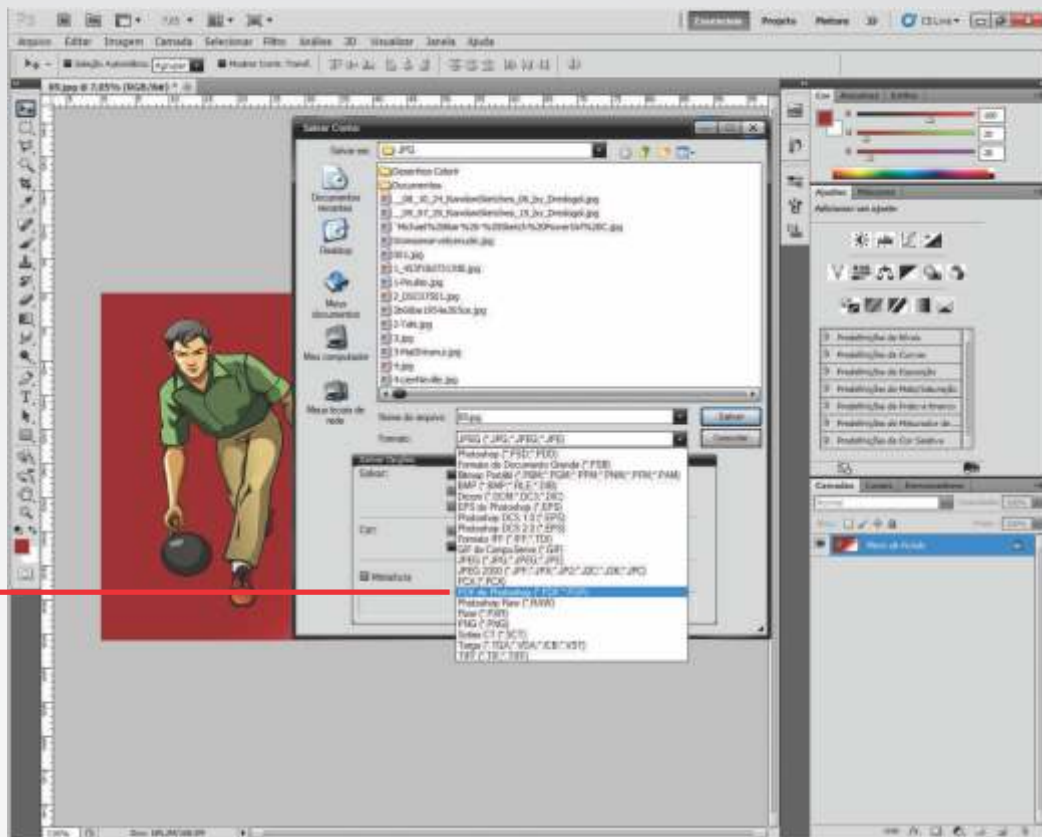
Colocamos no modo
Cor CMYK
Obs: se já estiver ok



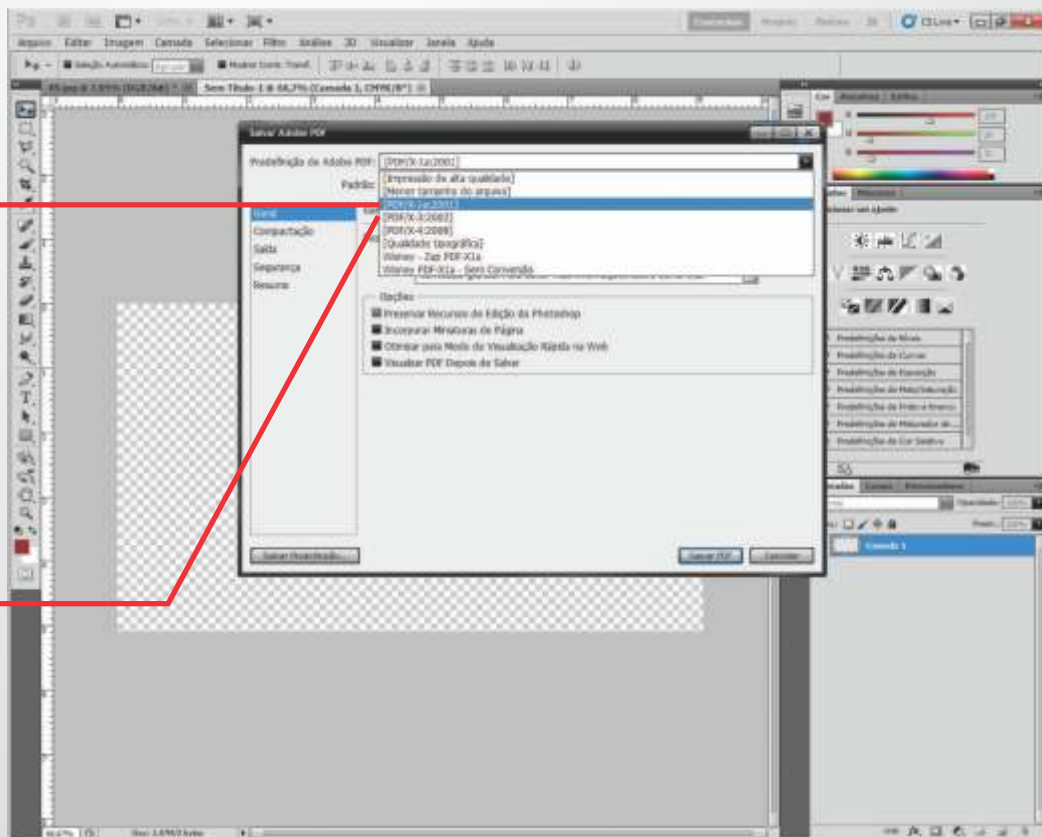
Salvar Como

CONFIGURANDO PDF-X1A NO ILLUSTRATOR

Salvado em PDF



Salvando em
PDF
Máximo



Predefinições
de Adobe PDF

Colocar: PDF/X-1a:2001

Padrão

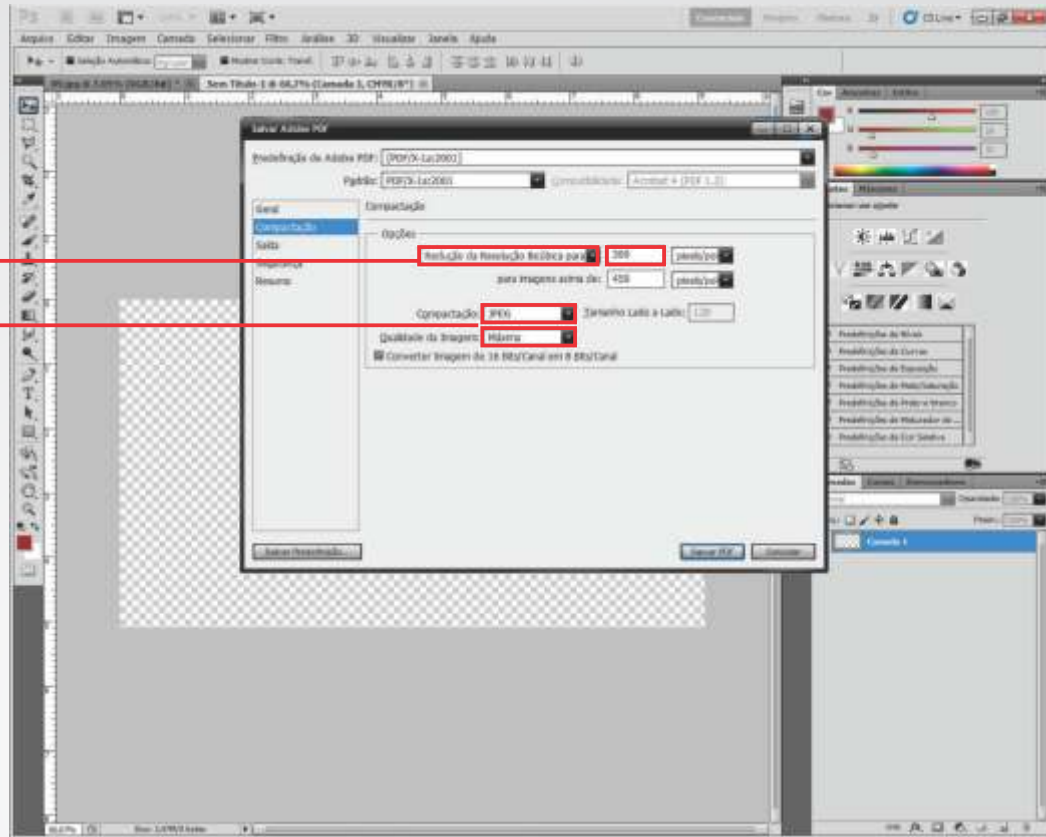
Colocar: PDF/X-1a:2001

CONFIGURANDO PDF-X1A NO ILLUSTRATOR

Guia de Compactação

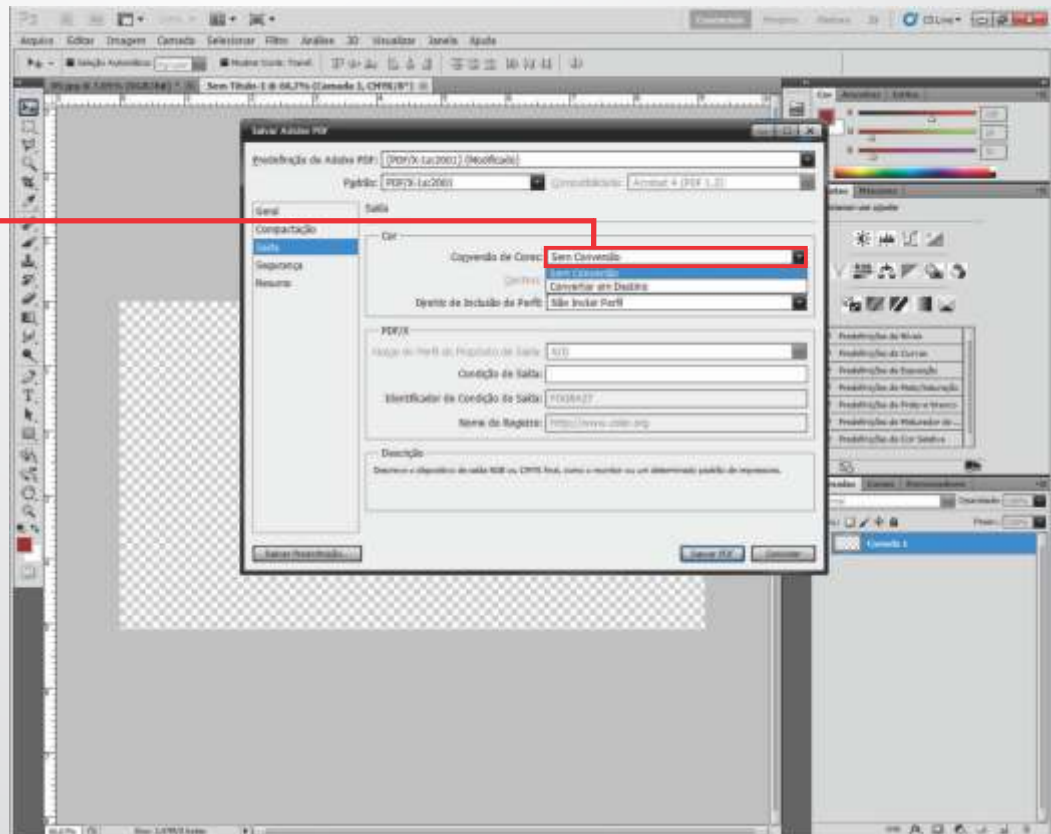
Redução da Resolução
300

Compactação
JPEG
Qualidade de Imagem
MÁXIMA



Guia de Saída

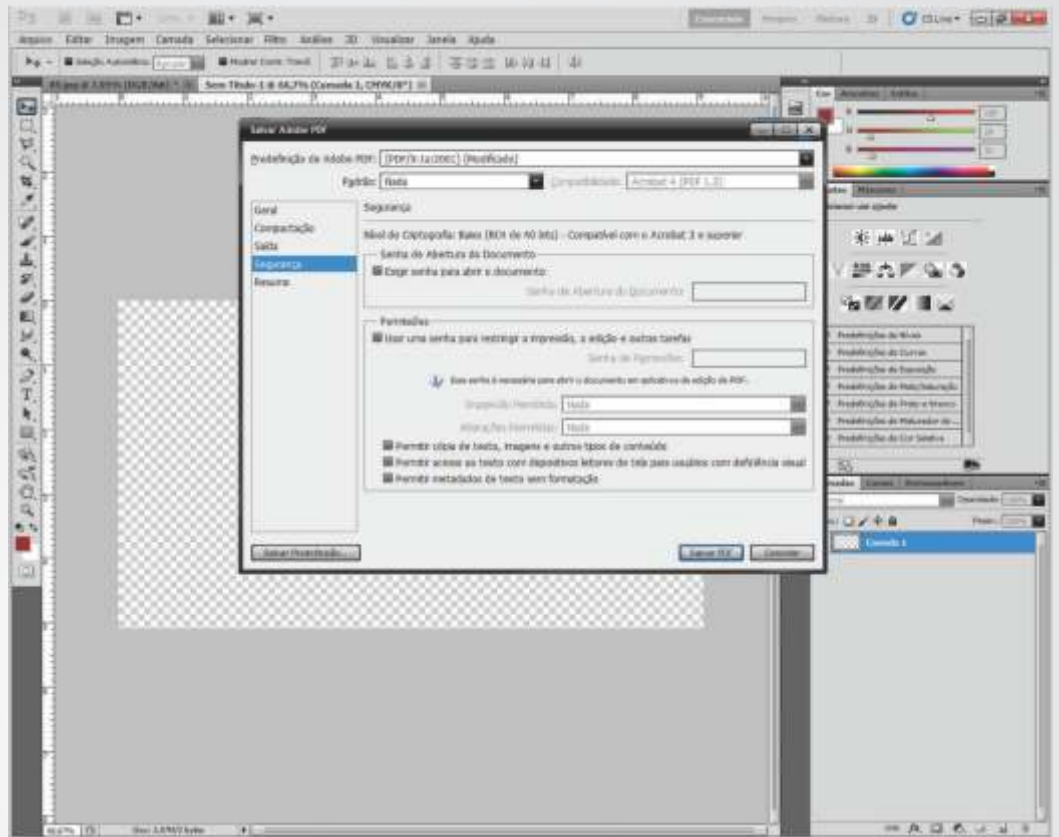
Conversão de Cores
sem conversão



CONFIGURANDO PDF-X1A NO ILLUSTRATOR

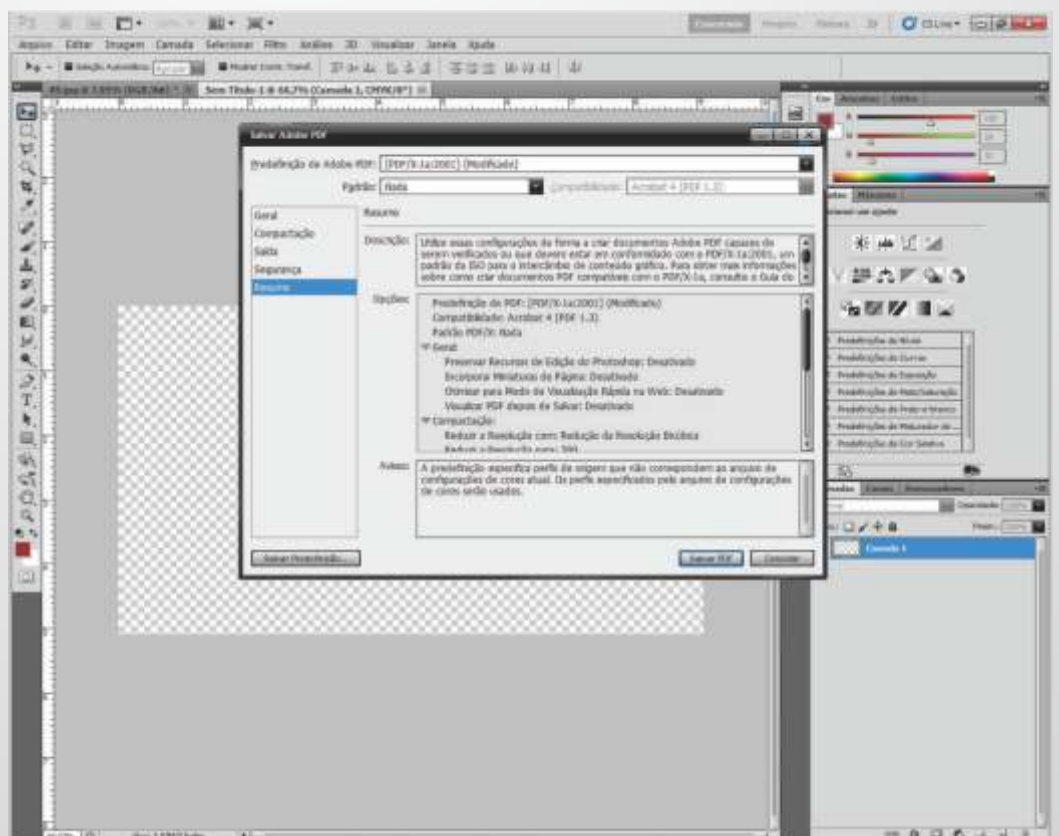
Guia de
Segurança

Segue
sem Mudanças

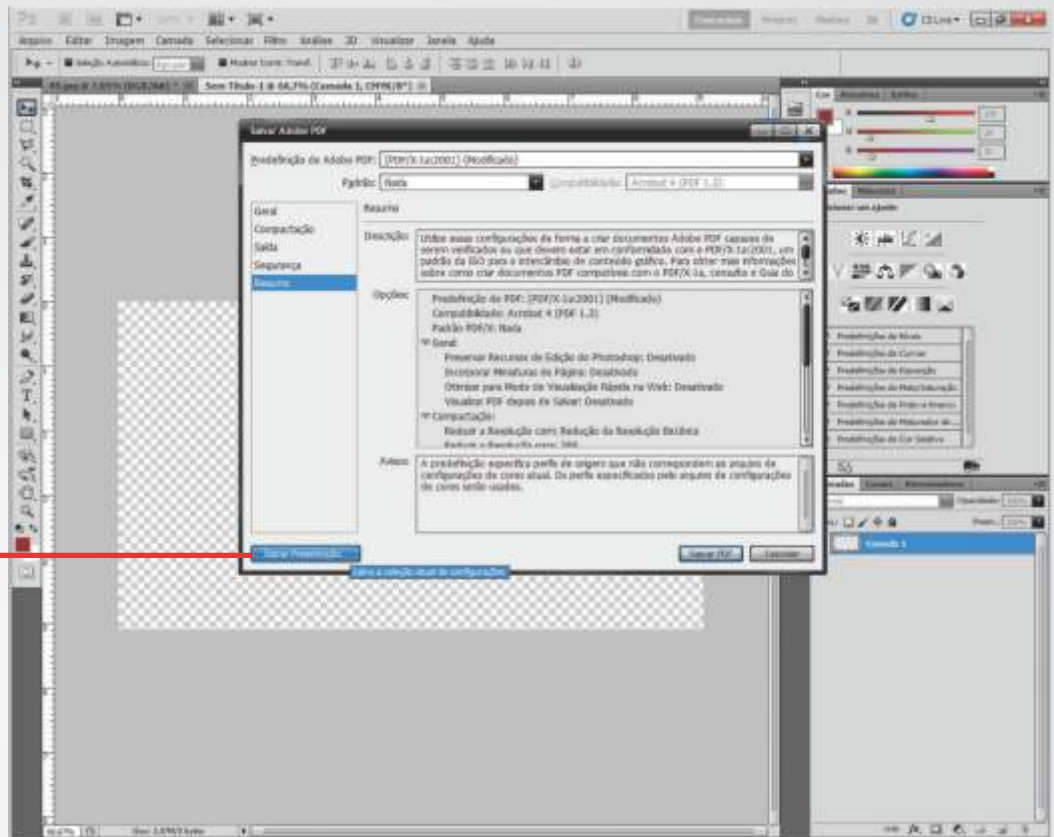


Guia de
Resumo

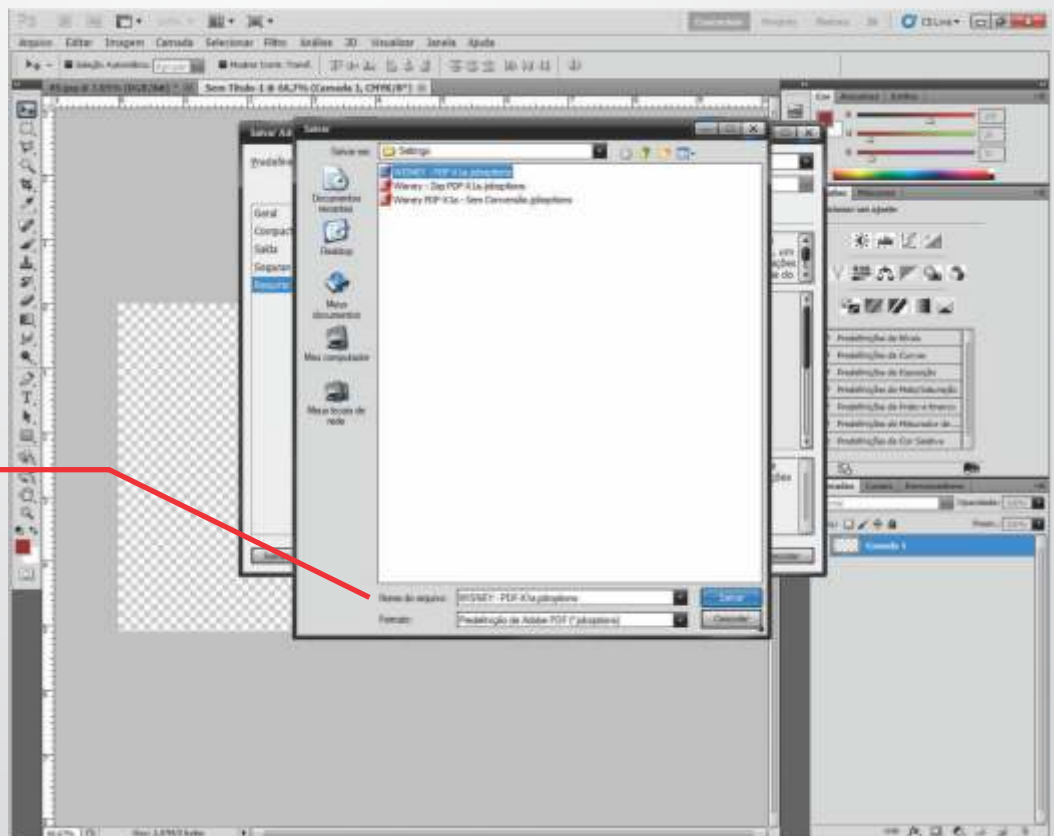
Segue
sem Mudanças



CONFIGURANDO PDF-X1A NO ILLUSTRATOR



**Salvar
Predefinições**
Salvar as novas
Configurações



**Coloque Aqui
o nome para
Salvar**